

case study

Creating a tech hub with the client experience at its heart

The Background

To meet the needs of a continually expanding workforce, Zurich Insurance relocated its Glasgow office to a new premises located on the seventh floor of the St Vincent Plaza in Glasgow's City Centre. Zurich wanted to create a working environment that had the client experience at its heart, creating an environment that vastly improves wellbeing for employees and allows for seamless collaboration. As a trusted technology advisor, Kinly was appointed to design and deliver an integrated audio-visual solution to complement the new office refurbishment and deliver a seamless user experience.

The project represented a fully integrated AV solution that embraces every area of the stylish new office, meeting the needs of Zurich's growing workforce by providing flexible meeting spaces, relaxation areas, training facilities, digital signage and video streaming services.



kinly.com

Working together. Everywhere. |

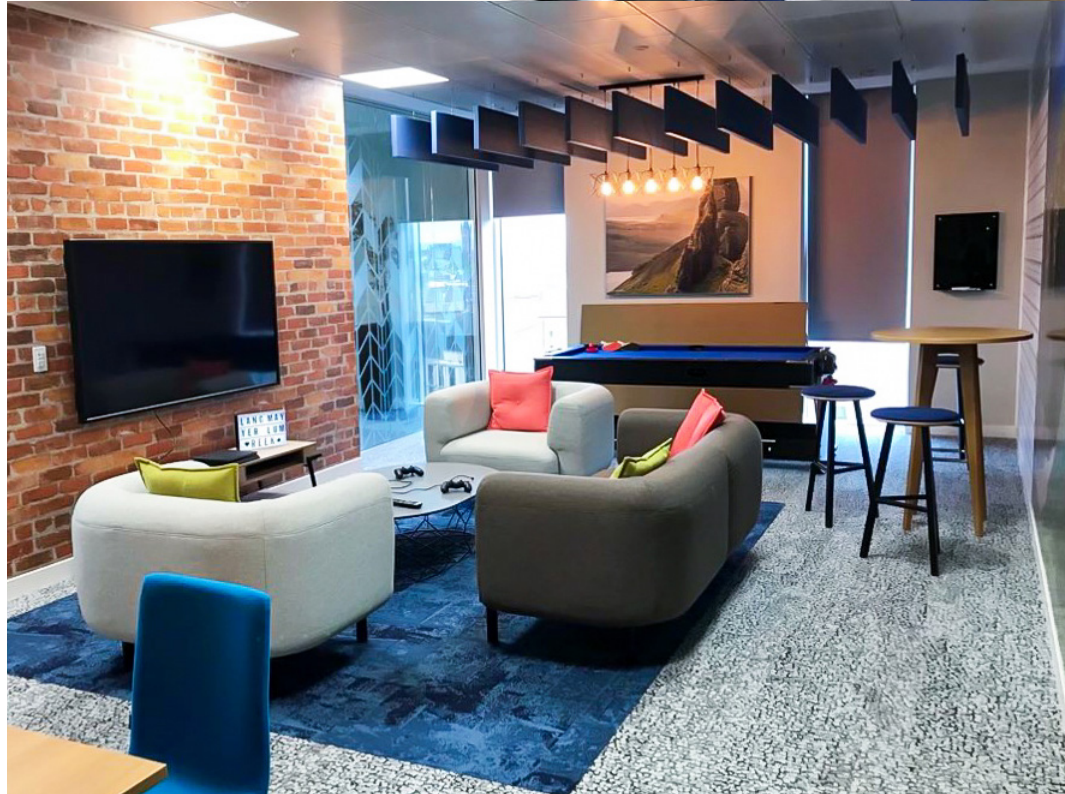
The solution

Having previously worked with the team at Zurich, Kinly understood that the technology needed to simplify and provide a better user experience for both employees and clients, including those with special requirements. We worked in close collaboration with Zurich's project team to develop a solution that linked the Glasgow office seamlessly with other locations by implementing technologies that were easy to use and enable employees to feel confident when using them.

With diversity and belonging being one of Zurich's main workplace initiatives, it was important that when visitors arrived at the reception, they felt welcome, regardless of their needs. A compact induction loop system is implemented into the area so that visitors with hearing difficulties can hear the receptionist as well as the content being displayed on a 70-inch NEC display.

The key features of the new office included a wellness area for employees to enjoy some time out from their busy work lives, a games room for relaxation and innovative meeting and collaboration spaces to support a flexible working environment.

Several 70- and 80-inch displays were located across the building. Onelan IPTV was installed to stream content and free to air HD TV channels in the wellness area and other communal areas of the building. Video conferencing and UCC solutions from Crestron, Polycom and Logitech were integrated across small meeting rooms, huddles spaces, a dedicated video conferencing room and a divisible board room. In addition, an 84-inch touch display with laptop connectivity at a presenter desk and wireless connectivity via Crestron Airmedia was implemented in the large training room.



SECTOR
CORPORATE



LOCATION(S)
GLASGOW, UK



SOLUTION
COMPLEX
AUDIO VISUAL

The **outcome**

The project was completed on time, within budget and to the client's exacting specifications. The result is a relaxing corporate environment that utilises the latest in AV technology and integrates them seamlessly into the stylish new surroundings.

Why **Kinly**?

Bringing people & technology together for better productivity wherever the work happens — because great things happen when people work together.

The **testimonial**

Louise Sheppard, Business Engagement Manager, Zurich Insurance

"We had previously worked with Kinly on an installation at our Farnborough office. They did such a fantastic job that it made sense to use them for our other offices. Having one supplier for this equipment makes on-going maintenance far simpler."

